

**ACCU-CHEK®**

Roche Diabetes Care is a pioneer in the development of blood glucose monitoring systems and a global leader for diabetes management systems and services. For more than 30 years, the Accu-Chek brand has been committed to enable people with diabetes to live life as normal and active as possible as well as to help healthcare professionals manage their patients' condition in an optimal way.

Roche Diabetes Care is pleased to support the College Scholarship Program of the Diabetes Scholars Foundation.



**crocs<sup>™</sup>  
medical<sup>Rx</sup>**

**CrocsRx™**, the medical division of Crocs, Inc., incorporates unique designs and Croslite™ Ag+ material to offer numerous shoes to those suffering from foot ailments. Our mission is to help individuals find the medical foot products that are most appropriate for their needs. Crocs is committed to designing and building comfortable shoes for the Diabetic community.

CrocsRx is proud to support the College Scholarship Program of the Diabetes Scholars Foundation.

**Jeff and Brenda  
Hitchcock**



**Andrew Mackenzie**  
University of California  
Santa Barbara



**Antenah Daniel**  
Stanford University



**Bailey Petersen**  
Penn State



**Ben Yarmis**  
George Washington  
University



**Carolyn Collins**  
University of Michigan  
Ann Arbor



**Christian Stokes**  
Augsburg College



**Hannah Rutherford**  
Duke University



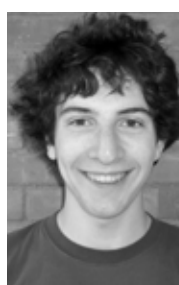
**John Carter**  
Brigham Young  
University



**Joseph Bartolacci**  
University of Chicago



**Justin Byrd**  
University of California  
Berkeley



**Justin Sola**  
Harvard



**Komal Khan**  
Emory University



**Kristin Repaci**  
Vanderbilt



**MacKenzy Harper**  
Auburn University



**Maya Talbott**  
Stanford



**Megan DePrimio**  
St. Vincent College



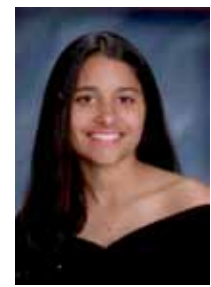
**Paul Justice**  
Lipscomb University



**Rebecca Cohen**  
Northwestern University



**Taylor Schulte**  
Johns Hopkins  
University



**Urusvati Narula**  
Dartmouth